



FioTec (Thailand) Co., Ltd.

www.fiotec.com

Tel: +66-2-381 1060
Fax: +66-2-381 1061

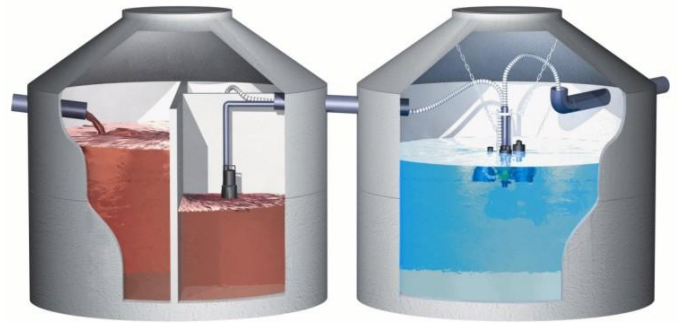
Mobile: +66-1-825 7764
E-Mail: info@fiotec.com

Industrial and residential wastewater treatment solutions

Sales, manufacturing, installation, commissioning and maintenance of chemical / physical and biological wastewater treatment plants

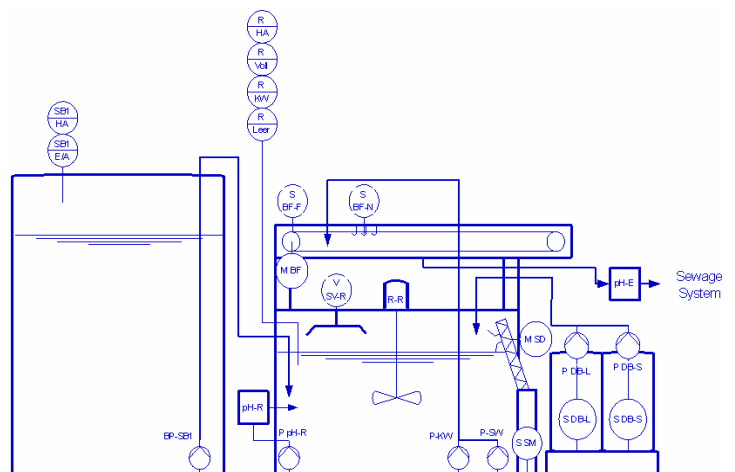
Biological wastewater treatment plants:
Fully automatic process, low energy consumption

- From 2 up to 6,000 people equivalent
- Hotels, guesthouses, restaurants
- Single houses, housing estates
- Hospitals, apartment buildings
- Breweries, food & beverage production
- Slaughter houses and other industries
- BSL3+ and BSL4 laboratories, industry (special design conditions applied)



Chemical / physical wastewater treatment plants:
Fully automatic process, easy to operate

- Capacity: 0.2 m³ up to 500 m³ per day
- Metalworking industry
- Paint manufacturers, painters
- Oil emulsions from cleaning process
- Glass manufacturers / converters
- Gas stations, carwash, garage
- Many other industries



CSA 4000-1